

**Wonersh & Shamley Green Parish –  
Habitat mapping and connectivity/enhancement opportunities**

The following maps have been created by Surrey Wildlife Trust Nature-based Solutions team as part of the Heathland Connections project\*:

- Habitat map (all broad habitat types)
- Heathland map
- Grassland habitat map
- Grassland plus arable habitat map
- Woodland map
- Hedgerows map
- Rivers and freshwater map
- B-lines map
- Statutory designations map

The following data sources were used to obtain this information:

- UKCEH Land Cover Mapping (LCM) (2021) - <https://www.ceh.ac.uk/data/ukceh-land-cover-maps>
- UKCEH Hedgerows dataset (2021) – <https://www.ceh.ac.uk/data/ukceh-land-cover-plus-hedgerows-2016-2021-england>
- Priority Habitats Inventory – <https://naturalengland-defra.opendata.arcgis.com/maps/Defra::priority-habitats-inventory-england/about>
- National Forest Inventory – <https://www.forestresearch.gov.uk/tools-and-resources/national-forest-inventory/>
- Ancient Woodland Inventory – <https://naturalengland-defra.opendata.arcgis.com/datasets/ancient-woodland-england/explore>
- OS Open Rivers - <https://www.arcgis.com/home/item.html?id=6048e8a5e29b49b093e79f08c732f109>
- Buglife B-lines map - <https://www.buglife.org.uk/our-work/b-lines/>
- Sites of Special Scientific Interest (SSSIs) - <https://naturalengland-defra.opendata.arcgis.com/datasets/Defra::sites-of-special-scientific-interest-units-england/about>
- Local Nature Reserves (LNRs) - [https://naturalengland-defra.opendata.arcgis.com/datasets/b1d690ac6dd54c15bdd2d341b686ecd7\\_0/exploration](https://naturalengland-defra.opendata.arcgis.com/datasets/b1d690ac6dd54c15bdd2d341b686ecd7_0/exploration)
- The maps were produced using Land App - <https://thelandapp.com/>

Please be aware that these habitat maps are intended to provide an indicative overview only. They are best-guess datasets and are therefore not 100% accurate or up-to-date. This is due to limitations with the datasets themselves and also our own limitations in being able to access or obtain licenses for more accurate/current data. However they should provide a good visual guide for what habitats are present across the parish and where the gaps are, indicating where the opportunities lie for improving connectivity between different habitat types.

\*Heathland Connections is a [Natural England](#) funded, partnership-led initiative, which will deliver habitat restoration by supporting landowners to effectively manage adjoining areas of remnant heathland under their care. Find out more [here](#).

## Recommendations

I'm aware that there is already a lot of expertise within the parish regarding habitat management, but I also know that it can be helpful to have the basics all in one place so it can easily be referred to and shared with other local landowners. I've compiled a summary of general management recommendations for each habitat type.

We are always happy to work with landowners and provide further advice where required, so please do signpost them our way if any of your local landowners would like our support -

<https://www.surreywildlifetrust.org/nature-based-solutions>

- **Heathland** – We have access to some historic heathland mapping, courtesy of Froglife and Thomson Ecology. While this work is confidential and we do not have permission to share it externally, there are some obvious candidates for heathland restoration where heathland has now become coniferous woodland, primarily in the Blackheath and Winterfold Hill areas. If a woodland owner in those locations would be interested in heathland restoration, we would be very happy to advise further on this. Recommendations would include anything from selective thinning in areas to encourage heather regeneration of the understorey, through to clear-felling to convert the whole area back to heathland (where appropriate).
- **Grassland** – Unsurprisingly, this is the most dominant habitat across the parish. Encouraging more wildflower meadow/margin creation would be a great way of enhancing these habitats and creating a network of sites for pollinators.
  - Plantlife have a useful guide for meadow creation, including how to prepare the ground and how to sow the seeds: <https://meadows.plantlife.org.uk/making-meadows/>
  - Plantlife also have a fantastic guide for managing wildflower meadows, including an annual management cycle diagram: <https://www.plantlife.org.uk/learning-resource/managing-meadows/>
  - As much of the parish is in a B-line, this information from Buglife may also be of interest: <https://www.buglife.org.uk/our-work/b-lines/>
- **Woodland** – The parish has great coverage of native deciduous woodland, with several areas classed as designated ancient woodland. Managing these woodlands appropriately will significantly enhance their value for wildlife.
  - For an overview of the basic woodland management principles and techniques, see this webpage: <https://www.wildlifetrusts.org/wildlife/managing-land-wildlife/how-manage-woodland-wildlife>
  - For a more detailed guide, this simple Forestry Commission guide outlines the different woodland management practices and the reasons for them: [https://assets.publishing.service.gov.uk/media/661914a0c1d297c6ad1dfe58/MM\\_factsheet\\_Apr\\_24.pdf](https://assets.publishing.service.gov.uk/media/661914a0c1d297c6ad1dfe58/MM_factsheet_Apr_24.pdf)
  - **Ancient Woodland** – To find out more about your ancient woodlands and why they are so valuable, you can have a look at this Woodland Trust page: <https://www.woodlandtrust.org.uk/trees-woods-and-wildlife/habitats/ancient-woodland/>

- **Advisors -**
  - The Woodland Trust have local outreach advisors that provide free advice for ancient woodland management. Their central contact is: [WoodlandOutreachEnglandSoutheast@woodlandtrust.org.uk](mailto:WoodlandOutreachEnglandSoutheast@woodlandtrust.org.uk)
  - The Forestry Commission also have local advisors that provide free woodland management advice: [southeast.fce@forestrycommission.gov.uk](mailto:southeast.fce@forestrycommission.gov.uk)
- **Woodland Creation –**
  - For landowners interested in planting new woodland, they may be interested in the English Woodland Creation Offer (EWCO) grant: <https://www.gov.uk/guidance/england-woodland-creation-offer>  
Jade Hemsley is the local Forestry Commission advisor that can advise further on this ([jade.hemsley@forestrycommission.gov.uk](mailto:jade.hemsley@forestrycommission.gov.uk))
  - Funding is also available through the Woodland Trust for tree planting: <https://www.woodlandtrust.org.uk/plant-trees/trees-for-landowners-and-farmers/morewoods/>
- **Scrub** – Not mapped here, but scrub is still an incredibly valuable habitat that can benefit a wide range of species when managed appropriately. More information on scrub management can be found here: <https://farmwildlife.info/how-to-do-it/existing-wildlife-habitats/scrub/>
- **Hedgerows** – Hedgerows are a fantastic way of improving connectivity between different parcels of land. A native mixed hedgerow will support a range of different species, but only if it's in good condition. There are two main recommendations for hedgerows – to plant more, and to manage them well. The below links will go into these in more detail.
  - **Hedgerow planting -**
    - Suffolk Wildlife Trust have produced this helpful introductory guide to hedgerow planting: <https://www.suffolkwildlifetrust.org/conservationadvice/woodlands-and-hedgerows/planting-hedgerow-wildlife>
    - For a more in-depth guide to hedgerow planting, you can find Hedgelink's guide here: [https://hedgelink.org.uk/cms/cms\\_content/files/75\\_ne\\_hedgerow\\_planting.pdf](https://hedgelink.org.uk/cms/cms_content/files/75_ne_hedgerow_planting.pdf)
    - Funding is also available through the Woodland Trust for hedgerow planting: <https://www.woodlandtrust.org.uk/plant-trees/trees-for-landowners-and-farmers/morehedges/>
  - **Hedgerow management –**
    - Suffolk Wildlife Trust have produced this helpful introductory guide to hedgerow management: <https://www.suffolkwildlifetrust.org/conservationadvice/woodlands-and-hedgerows/hedgerow-management>
    - This Hedgelink guide outlines why hedgerow management is so important: [https://www.hedgelink.org.uk/cms/cms\\_content/files/30\\_complete\\_good\\_hedge\\_management\\_guide\\_leaflet.pdf](https://www.hedgelink.org.uk/cms/cms_content/files/30_complete_good_hedge_management_guide_leaflet.pdf)

- This Hedgelink guide outlines the different management techniques and provides examples:  
[https://www.hedgelink.org.uk/cms/cms\\_content/files/78\\_hedgelink\\_a5\\_12pp\\_leaflet\\_7.pdf](https://www.hedgelink.org.uk/cms/cms_content/files/78_hedgelink_a5_12pp_leaflet_7.pdf)
- We (SWT) have also produced a series of management plans for hedgerows at different life stages (newly planted, newly laid etc). These are available from us on request.
- **Agricultural land** – There are lots of ways that agricultural land can be adapted to ensure that nature and food production can co-exist, such as wildflower margins and buffer strips. Farm Wildlife have lots of useful information about nature-friendly farming interventions on their website: <https://farmwildlife.info/>
- **Freshwater (ponds)** – Well-managed ponds can support a huge range of freshwater species, as well as providing a water source for birds and other wildlife. The Freshwater Habitats Trust have created a suite of resources which various topics relating to pond management for biodiversity: <https://freshwaterhabitats.org.uk/advice-resources/pond-management-hub/>  
They have also created this handy FAQ page for answers to common questions regarding pond creation and maintenance: <https://freshwaterhabitats.org.uk/advice-resources/frequently-asked-questions/>
- **Other designations** – In addition to your SSSI and LNR, you also have a few designated Sites of Nature Conservation Importance (SNCIs) in the parish. This is a non-statutory designation given to sites that have been identified locally for their conservation value. You can find out more about this designation here:  
<https://www.surreywildlifetrust.org/what-we-dorestoring-surreys-nature/protected-wildlife-sites>  
To enquire about the SNCIs within the parish, you can contact the Surrey Biodiversity Information Centre: <https://www.surreywildlifetrust.org/what-we-do/professional-services/records-centre>

We have also produced some species management guides as part of this project. These outline different management actions that can benefit our three target species, and the grants that are available to assist in carrying out these actions. The guides are available to view and download here:

- [Managing land for adders](#)
- [Managing land for nightingales](#)
- [Managing land for grayling butterflies](#)

### Further Resources - Wild About Gardens booklets

For local residents without large landholdings, they can still do actions in their own gardens that can help to support wildlife. This series of useful guides have been created by the RHS in collaboration with The Wildlife Trusts. They contain some great ideas and tips, as well as providing a list of recommended plant species to attract different pollinators.

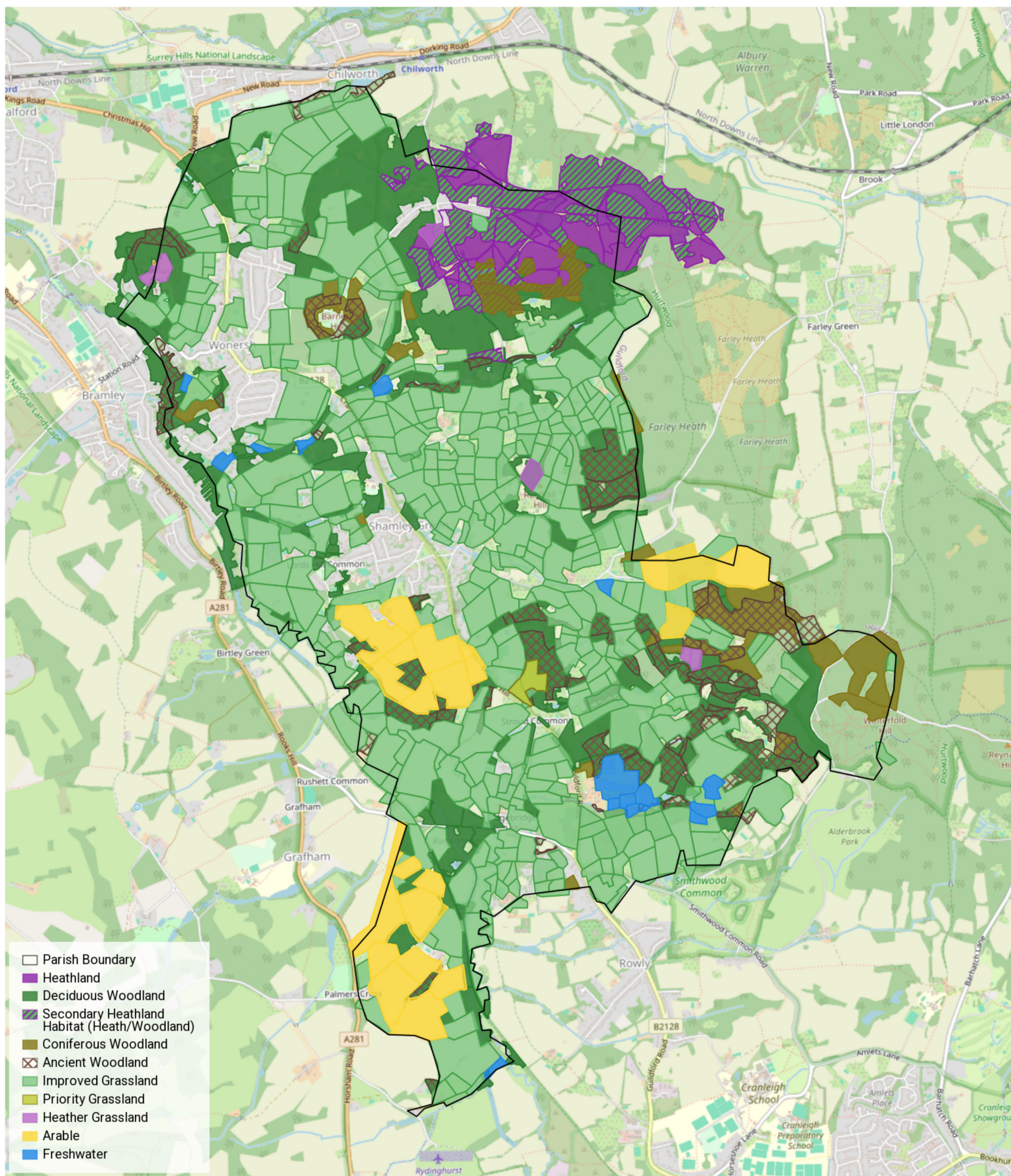


- **Lawns:** [https://www.wildaboutgardens.org.uk/sites/default/files/2023-03/230306%20RSWT%20Wild%20about%20Lawns\\_Booklet%202023%20web%20no%20logo.pdf](https://www.wildaboutgardens.org.uk/sites/default/files/2023-03/230306%20RSWT%20Wild%20about%20Lawns_Booklet%202023%20web%20no%20logo.pdf)
- **Butterflies:** [https://www.wildaboutgardens.org.uk/sites/default/files/2022-03/200102%20RSWT%20WAG2020%20Booklet\\_FINAL%20WEB%20WITH%20NEW%20LOGO.pdf](https://www.wildaboutgardens.org.uk/sites/default/files/2022-03/200102%20RSWT%20WAG2020%20Booklet_FINAL%20WEB%20WITH%20NEW%20LOGO.pdf)
- **Bees:** [https://www.surreywildlifetrust.org/sites/default/files/2023-03/BEES%20%20WAG%202017%20-%20Booklet%20AW\\_%20new%20logo%20web\\_0.pdf](https://www.surreywildlifetrust.org/sites/default/files/2023-03/BEES%20%20WAG%202017%20-%20Booklet%20AW_%20new%20logo%20web_0.pdf)
- **Beetles:** [https://www.surreywildlifetrust.org/sites/default/files/2023-03/200204%20RSWT%20WAG2021%20Booklet\\_WEBSPREADS\\_ENGLISH.pdf](https://www.surreywildlifetrust.org/sites/default/files/2023-03/200204%20RSWT%20WAG2021%20Booklet_WEBSPREADS_ENGLISH.pdf)
- **Molluscs:** <https://www.wildaboutgardens.org.uk/sites/default/files/2024-03/WAG%202024%20-%20Making%20friends%20with%20molluscs.pdf>
- **Worms:** [https://www.wildaboutgardens.org.uk/sites/default/files/2022-03/19357%20WAG%202018%20-%20Booklet%20AW\\_%20new%20logo%20web\\_0.pdf](https://www.wildaboutgardens.org.uk/sites/default/files/2022-03/19357%20WAG%202018%20-%20Booklet%20AW_%20new%20logo%20web_0.pdf)
- **Bats:** <https://www.wildaboutgardens.org.uk/sites/default/files/2022-03/WAG16%20Bats%20updated%202022%20WEB.pdf>
- **Hedgehogs:** <https://www.wildaboutgardens.org.uk/sites/default/files/2022-03/16597%20WAG%20-%20Hedgehog%2016pp%20Booklet%20AW%20web.pdf>
- **Swifts and swallows:** <https://www.wildaboutgardens.org.uk/sites/default/files/2022-03/Swifts.pdf>

*Please note that the advice given is based on the current accepted guidance and government regulations. We cannot guarantee a certain outcome based on the advice provided. These are recommendations only. Separate expert financial advice should be sought over matters relating to grants and funding option.*



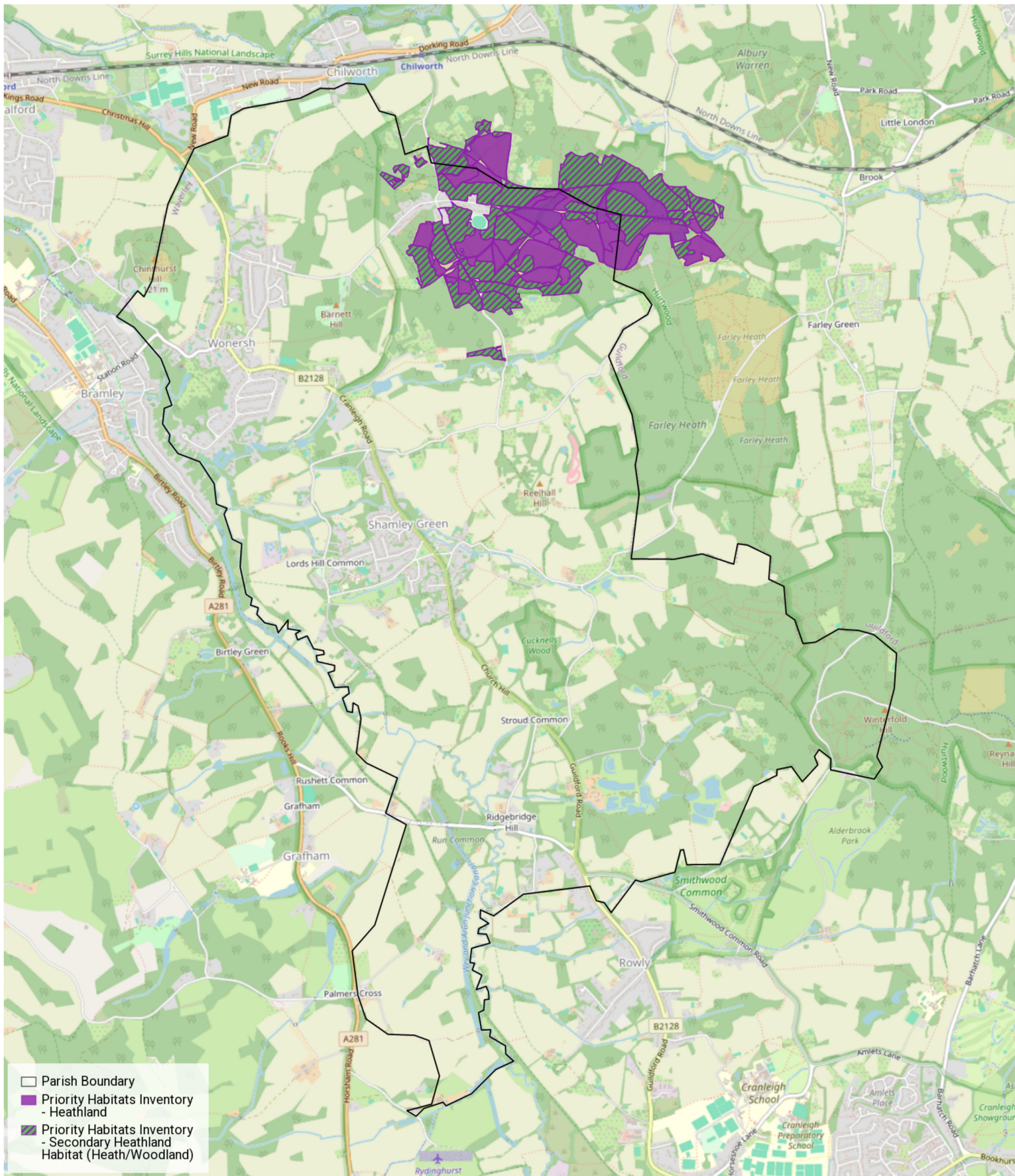
## Habitat map - Wonersh & Shamley Green Parish







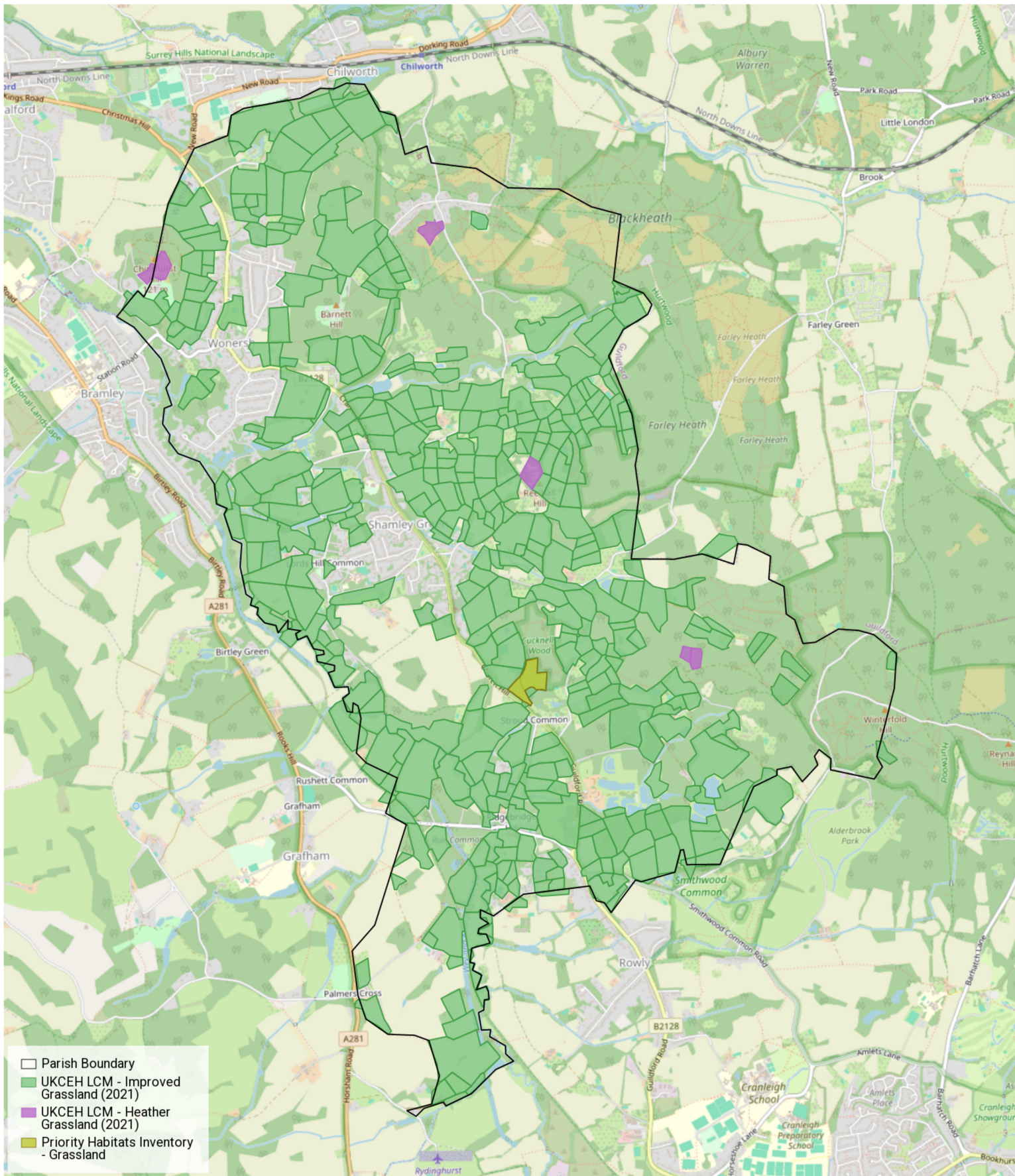
## Heathland map - Wonersh & Shamley Green Parish







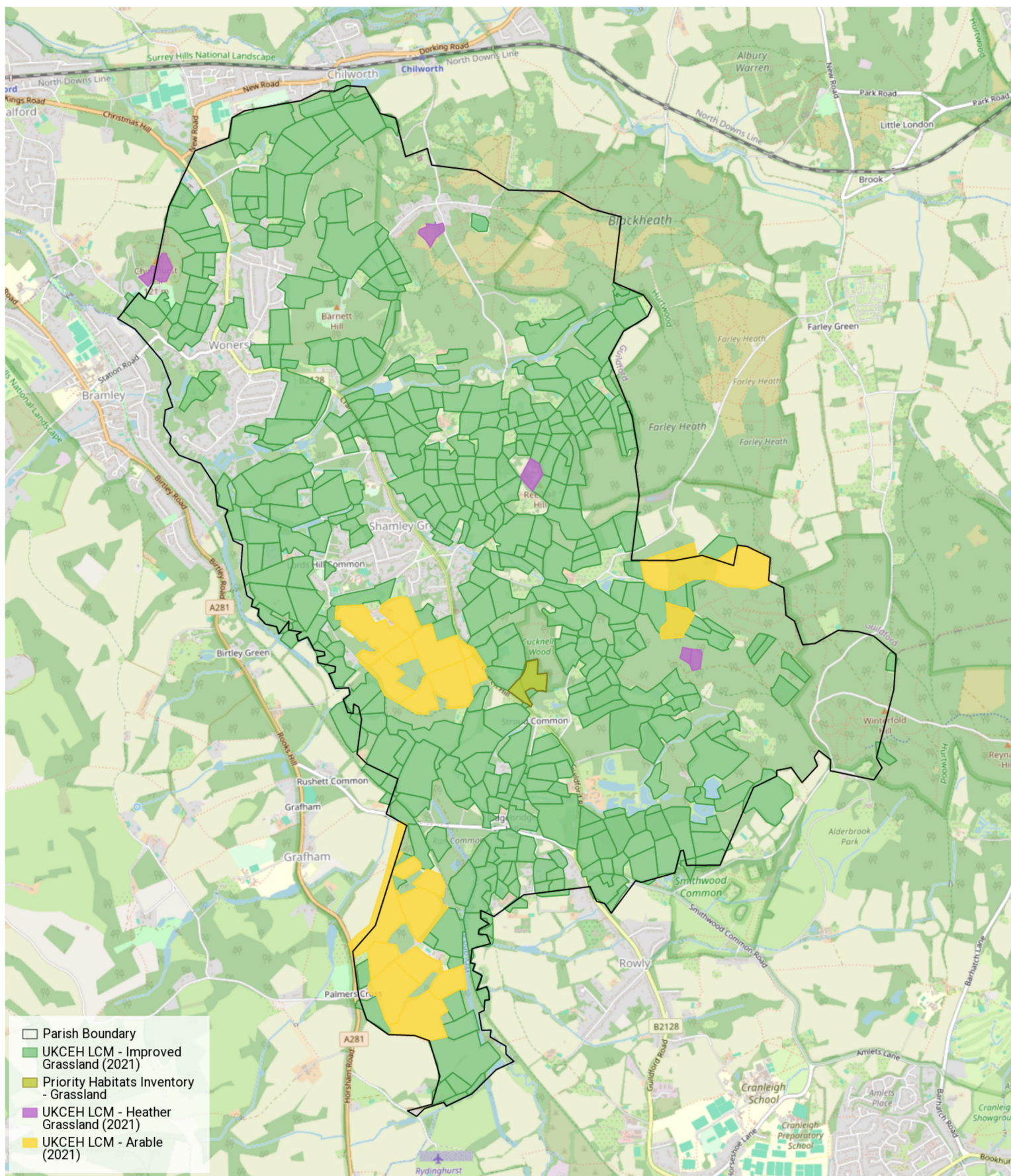
## Grassland map - Wonersh & Shamley Green Parish







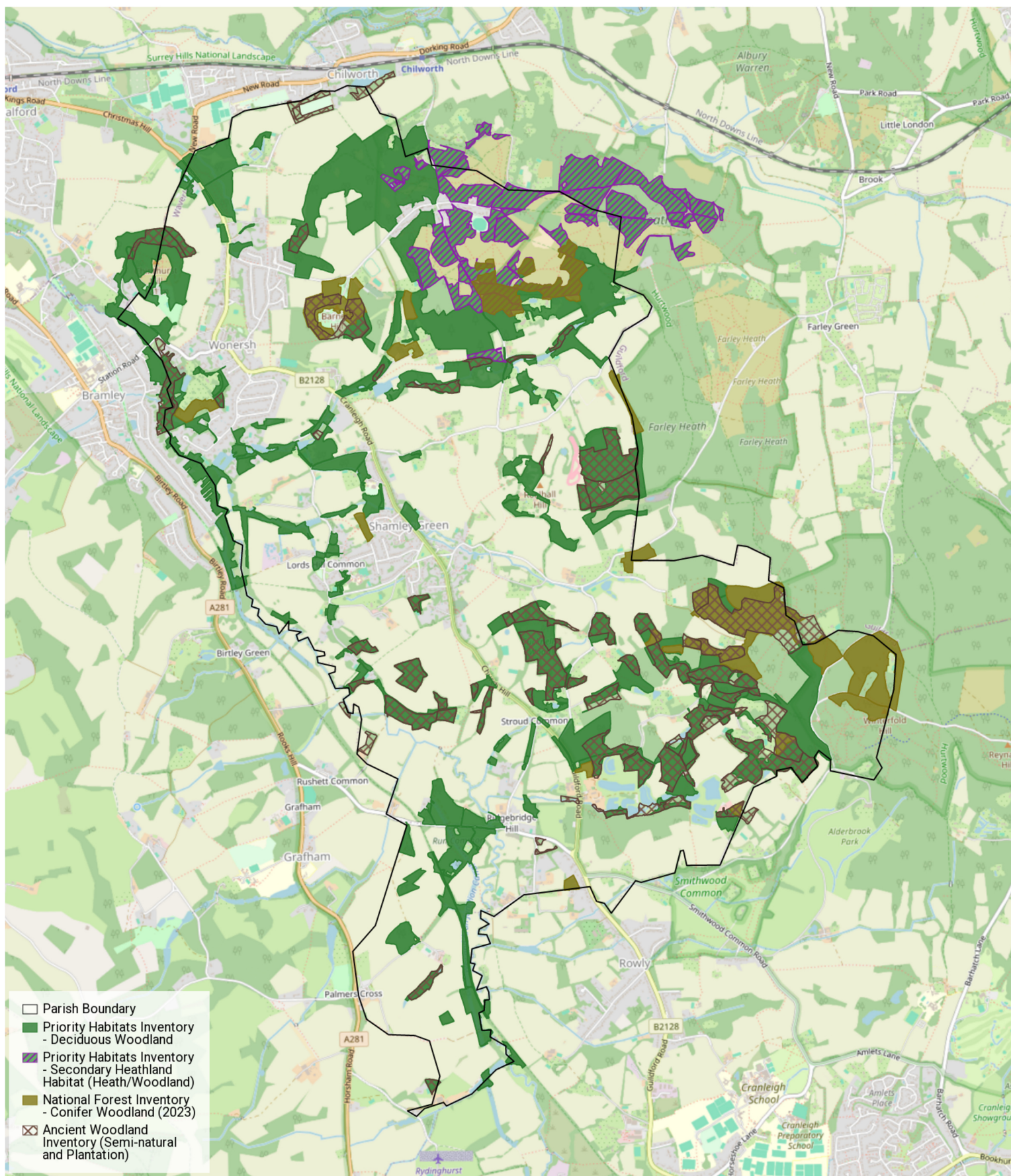
# Grassland/Arable map - Wonersh & Shamley Green Parish





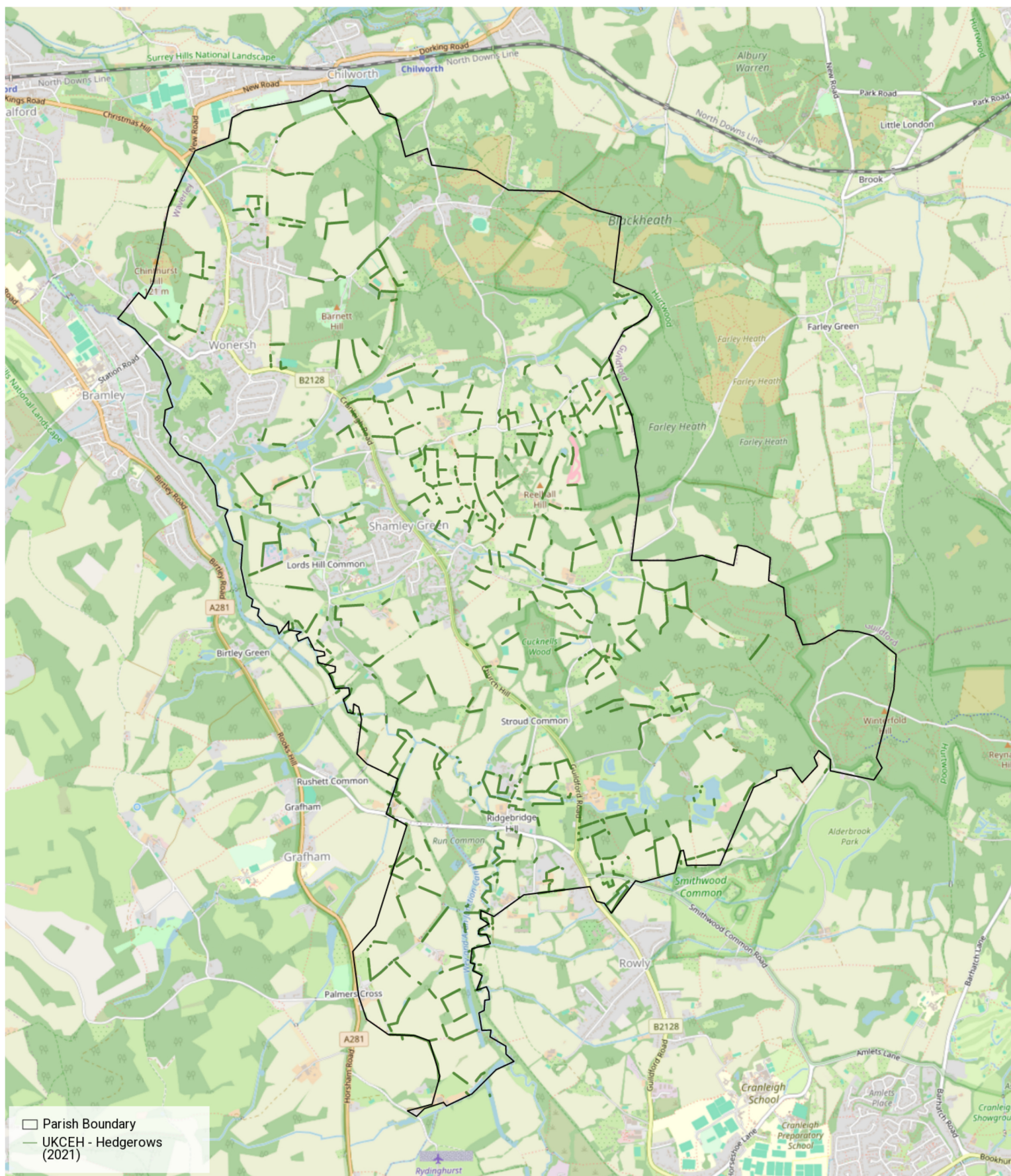


## Woodland map - Wonersh & Shamley Green Parish



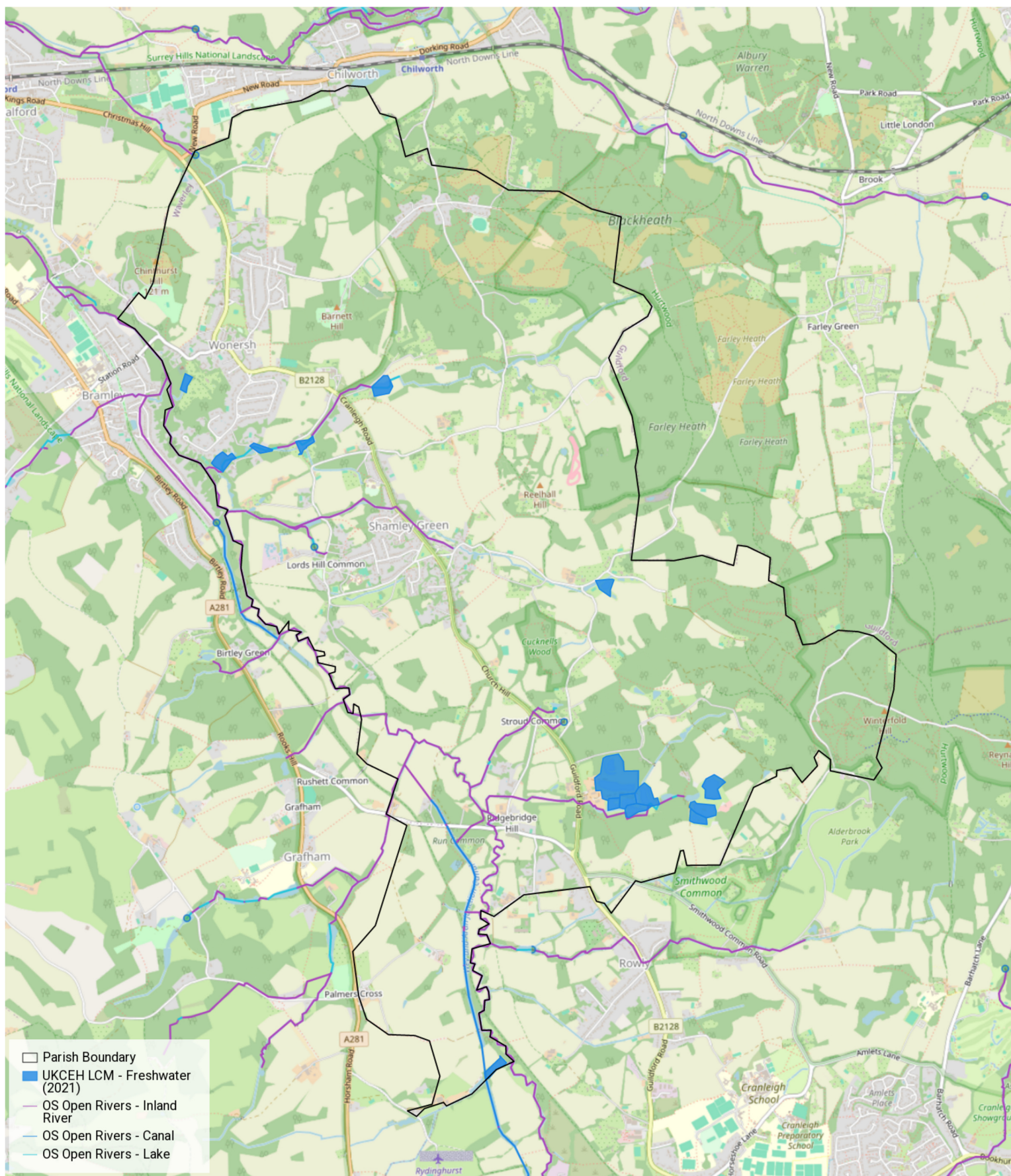


# Hedgerows map - Wonersh & Shamley Green Parish





# Rivers & Freshwater map - Wonersh & Shamley Green Parish







## B-lines map - Wonersh & Shamley Green Parish

